

Edition 227
2020/21

Scaldwell Newsletter

Dec/Jan
2020/21

Editor - Sue Dodds-Smith
01604 881950 - d.doddsmith@me.com

Parish Council News

Chairman: Eugene O'Leary, 5 Back Lane. **Vice Chair:** Dudley Cross, Ash Tree House, Old Road

Councillors: -

Pam Long, Orchard House, West End
Dara Masterson-Jones, Home Farmhouse, The Green.,
Margaret Vinton, The Old House, East End
Richard Wilson, The Old Thatch, West End
Emre Amirak, Scaldwell House, High Street

Clerk: Katrina Jones, 77 High Street, Naseby, Northants NN6 6DD

Website: www.scaldwellparishcouncil.org.uk, email - scaldwellpc@gmail.com

Since the last newsletter, the Parish Council has met on two occasions, both via 'Zoom'.

The main issue arising from these meetings was the safety concern raised by many parishioners regarding both the speed at which some drivers are travelling down the High Street and the number of incidents when vehicles mount the pavement rather than wait for oncoming traffic to pass.

A meeting was arranged with Highways and council has agreed to a number of measures including the purchase of speed display signs at either end of the village (grant application being successful), extending the white line road markings outside the Old Fox and exploring the options, such as bollards or a raised kerb, to discourage vehicles from mounting the pavement. It was agreed that Council would consider instructing an independent expert to advise on any other possible road safety measures.

The Parish Council is in the process of producing a 'Welcome Pack' for new residents. More information will follow in due course.

Weather permitting, it is hoped to have the old phone kiosk painted and new defibrillator signs installed shortly.

Early in the New year there will be a vacancy on the Parish Council. Information will follow, nearer the time, for anyone considering joining the council.

The next scheduled meeting of the Parish Council will take place, via Zoom, on **Wednesday 16th December**. Information on how to access the meeting will be found on the agenda.

In the meantime, please keep safe and have a very Happy Christmas! **Please see back page for article on the installation of the defibrillator.**

The Parish Council are delighted to announce that a Christmas tree will be placed on the green to bring a little Christmas cheer to all. It will certainly add to the Carol Service to be arranged for Christmas Eve.



With Seasons Greeting to all our friends and neighbours in Scaldwell

In place of sending individual Christmas Cards we have made a donation to
Médecins Sans Frontières
The Charity was chosen by
Christopher Angeloglou

Emre & Sinead Amirak
Christopher Angeloglou
Mark & Caroline Baker
Paul & Georgina Carter
Annie Curtis
Eddie Cockram
Sue Dodds-Smith
Geoff & Jill Gardener
Nigel & Alison Goodenough
Jane Slinn
David & June Keir
Dylan & Jenny Lewis
Pam Long

Bill & Margaret Marsden
Nick & Dara Masterson-Jane Monk
Roger & Kathy Morgan
Martin & Charlotte Neale
Eugene O'Leary
Roy & Jacqui Partridge
Karen Pirie
Joan Randell
Rob & Sally Thorne
Matt & Michelle Wharton
Olive Wootton

THIS YEAR WILL WE HAVE RAISED £400+

MANY THANKS TO YOU ALL

The Village website is now live so please

visit www.scaldwellvillage.org

Thanks to Nick Marsterson-Jones for the work he has done in getting the site updated and live.



CHRISTMAS WINDOW DISPLAY

Join in the fun and spread some joy around the village in December by creating your own 'Christmas window display'

You can be as creative as you like, carols, films, nativity or humorous the choice is yours.

Chocolate rewards will be given 😊

TENNIS COURT NEWS

The new court is now available for play so hopefully after lock down on the 2nd December the weather will be kind enough to let play restart.

The final colour coating will be completed in March 2021, due to winter weather conditions, but temporary lines have been painted so let play commence!

It's Christmas, Jim, but not as we know it!

By Revd David Bent (Rector)

Tel: 01604 781667. Email: davidbent99@btinternet.com

To say that planning for Christmas has been different this year would be an understatement; shopping is different, office parties and carol services will be different, if they happen at all, visiting friends and family will be different, and the way we spend Christmas Day will probably also be different. To misquote the 1987 song, inspired by Star Trek, 'It's Christmas, Jim, but not as we know it'.

The way many people celebrate Christmas this year may be different, but the message of Christmas remains the same, indeed the message of Christmas is perhaps more significant this year than it has been for many years. At the heart of the Christmas message is God, identifying with the human race and the human condition by becoming one of us, sharing our joys and our sorrows, our hopes and our fears, and bringing us his peace, his love and his joy, for this life and for eternity.

This is summed up in the name 'Emmanuel', a name attributed to Jesus in Matthew's gospel, a name which means 'God with us'. The amazing truth is that God is with us in the hardships and the grief of Covid 19, and God is with us in the celebrations of Christmas, the birth of his Son, in whatever way we are able to do that this year.

Today the world is waiting for a saviour, in the form of a long-expected vaccine, to set us free from the oppression of a virus. Two thousand years ago the nation of Israel, occupied at that time by the Romans, was waiting for a Saviour, in the form of their long-expected Messiah, to deliver them from oppression and bring in the Kingdom of God. This is expressed in the words of Advent Carol,

*'O come, O come, Emmanuel,
And ransom captive Israel,
That mourns in lonely exile here,
Until the Son of God appear.*

Maybe Christmas 2020 is a time to rediscover the heart of Christmas as we, in some way, 'mourn in lonely exile'. If we were to take away the carol services and the family gatherings, the cards and the presents, the work's dinners and the parties, the tinsel and the tree, and even the turkey and the Christmas pudding, we would still be left with Christmas, and what we would be left with might bring us closer to the real meaning of Christmas than we have been before. What we would be left with is the Son of God, born in a stable to live among us as a man and to die for us on a cross.

As we celebrate Christmas this year, in whatever way we can, let us also be aware of those around us who may be facing a difficult time away from loved ones. If we can, let us extend the hand of friendship and hospitality beyond our normal circle of friends and family, and let us rediscover 'God with us'. As the advent carol continues,

Rejoice! Rejoice! Emmanuel

Shall come to thee, O Israel

SPEED LIMIT REMINDER

Like many villages in recent years, Scaldwell has experienced a considerable increase in the volume of local and through traffic.

Careful motorists keep to the speed limit through the village, but there are a number of drivers who need reminding that the maximum permitted speed is **30 M.P.H!**

We want to avoid a major accident in Scaldwell that could so easily be caused by speeding.

So please remember.....

**Keep to 30 m.p.h
Thank you**

Rob Thorne

Christmas Eve Carols.

You may be aware that it is hoped that, COVID restrictions permitting, we will have a Christmas Eve service this year, albeit a shortened version on The Green as opposed to in the church at 4pm. Final details will be put on the Village website and the notice board on the Green.

We will still be intending to have the village children singing together, in a COVID restrictions compliant way. It is very much a case of the more the merrier, and it will be particularly memorable this year with it being outside, so if any parents who have school age children are interested then please get in touch with Tom Joyner either at thomasjoyner@hotmail.com or drop a text of call to 07771831375. There will be one or two practices prior to the service on the 24th.

SCALDWELL CLUB NEWS

Sadly, following the Government's decision to implement another national lock down the Club has again had to close; the pensioners dinner, Christmas Starters and Christmas day drinks will disappointingly not happen this year. The committee are awaiting the Government's next move and hope to re-open on Friday nights as soon as the conditions allow. The committee will communicate any updates via the newly updated village website, the Scaldwell helping hands network or the next newsletter.

The club committee also have a number of exciting vacancies. If you are interested in getting involved and supporting the club as our chairperson, secretary or treasurer please get in touch with Rob (07900812444) or any other member of the committee.

We hope that there will be some normality soon so we can get back to what we do best, organising fantastic community events. In the meantime, stay safe and have a fantastic Christmas and New Year!

The Scaldwell Club Committee

THE WELL ON THE GREEN

The natural water supply that the village green has is probably the reason why the village and its green was first settled here, but the first use of it was possibly as the pond that existed until the second half of the 19th Century, between the present Old Post Office and the Town Well.

The earliest mention of the Town Well is on 13th March 1568 (not 1563 as is often claimed) where serving Trustees hand over the Town Well Estate Charity to new Trustees. In the document it states that the rents and profits of the Town House should be used to mend the Town Well and Highways of Scaldwell.

The following are fragments of historical information which I hope will give a very brief history of the well and show why this plain structure is held in affection by many Scaldwell people.

In May 1612 the Manor Court ordered that the Town Well should 'be repaired by such persons who ought to repair it before Michaelmas next or pay a £5 fine.'

There was a Smithy next to the well in the 19th Century. The Smith lived in a tiny cottage which is now part of the present Yew Tree Cottage.

The Town Well was rebuilt in 1874 using blue industrial brick, one of which has the manufacturer's name 'Broadbent & Stanley, Nuneaton' impressed on it. At the rear of the well were animal troughs for farm and other animals to drink from, which are still there but are now covered by soil and grass. It is probably when the well was re-built in 1874 that the village pond was also drained, as there was no more use for it.

Charlie Manning took over the bakery on the green in 1916. Two days later the thatch caught fire. A fire engine came from Northampton, pulled by horses, bells ringing, bright brass helmets and emptied the well on the Green, but it refilled in 20 minutes and they did put the fire out. Per Jim Alcock

During WWII the well served as an Altar when a series of services and prayers were held on the Green for the protection of loved ones from the village who were in the Forces.

Mains water came to Scaldwell in 1946, but people liked the flavour of the Well water better and in November of that year the Parish Council recorded that a new pump was to be procured. This was prevented by the Water Authority who removed the handle of the pump and concreted over the well.

The two limestone date stones on the well read:

1685

REBUILT
1874

The flat-topped 8 is because the mason carved it too large to fit into the border surrounding the date.

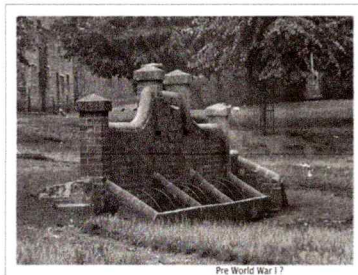
With thanks to Brian Hensman for contributing this village history item.

You can tell a lot about a person by the way they handle three things: A rainy day, lost luggage and tangled Christmas lights.

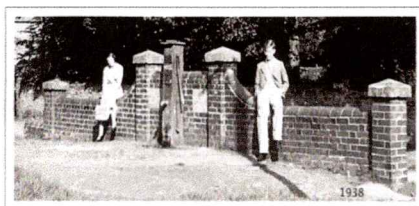
Scaldwell Brass for Victory



AMID the severity of the English countryside, which conditions did very existence the Nazis threaten, Scaldwell women pray for victory and the safety of their loved ones.



Pre World War I?



100 Club, Christmas 2020

The Village hall management committee has decided that, with all the COVID-19 restrictions, the annual 100 club should be postponed, for the time being.

A suggestion is to have it next year when, hopefully, the restrictions are lifted, and we could run a similar event around Easter time.

We will keep you posted!

Defibrillator Installation on the Green.

The Parish Council are pleased to confirm that the installation of the defibrillator within the former BT telephone kiosk on the green is now complete.

The Parish Council previously assumed ownership of the telephone kiosk from BT following a survey of usage which illustrated that no calls had been made in the previous four years. Following this, the Parish Council engaged with the Community Heartbeat Trust and with the assistance of donations from District Councillor Mrs Cecile Irving-Swift and The Scaldwell Charity, the Parish Council have purchased and arranged for the installation of a defibrillator within the telephone kiosk for the benefit of parishioners.

The defibrillator has been registered with the East Midland Ambulance Service and in the unfortunate event that it is required to be used, there is a telephone link and instruction details with the defibrillator pack. The telephone kiosk has been fully cleaned and is due to be redecorated shortly, (weather permitting) at which point the previous 'Telephone' signs will be replaced.

The Parish Council considered the green to be the most central and appropriate location in the village for the defibrillator and it has been pleased to re-purpose the telephone kiosk to accommodate this facility.

Should anyone have any queries regarding the defibrillator, please contact the Parish Council.

NEWS ON THE REFURBISHMENT OF THE VILLAGE WELL.

For several years the Parish Council and interested villagers have been investigating the possibility of restoring the village well, possibly to a working well, but initially to reinstate the well pumping section and handle to look as it would have done when it was used by the village for its water supply. A stonemason and blacksmith have been consulted and quotes requested and news on the progress will be reported in later Newsletters.

This will, of course, necessitate the placement of the War Memorial to another site. One suggestion of a new site and support plinth has already been received and further consultation will take place with interested villagers so that a final decision on the plinth and the placement of the Memorial can be made. **If you would like to be included in the committee for resiting the memorial please contact Nick Masterson-Jones on nickrmj@icloud.com**

Scaldwell Travel Scheme

You may remember that we are trying to set up a small travel scheme using volunteers to enable a regular connection from Scaldwell to connect in with our closest bus service - the X7 to Market Harborough or Northampton - following the withdrawal of our 62 bus service.

If any Scaldwell residents are interested in booking a one off or a regular place for the scheme then please contact Tom Joyner who is organising the scheme. Tom can be contacted on text/phone on 07771831375, or email on thomasjoyner@hotmail.com

The scheme, which is being risk assessed to ensure it is COVID restrictions compliant, will operate on Fridays leaving Scaldwell at 0930 to connect in with the X7 at Brixworth, and returning to Scaldwell after a few hours shopping in Market Harborough or Northampton.

Why did Santa quit smoking – because it was bad for his elf

*Wishing you and your family
health, happiness and peace
for the coming Christmas
and New Year*