

Parish Council News

Chairman: Dudley Cross - Ash Tree House, Old Road
Councillors: Pam Long - Orchard House, West End. Dara Masterson-Jones - Home Farmhouse, The Green. Margaret Vinton - The Old House, East End. Richard Wilson - The Old Thatch, West End. Emre Amirak - Scaldwell House, High Street. Jane Monk - 1 Poplars Court, West End
Clerk: Katrina Jones - 77 High Street, Naseby, Northants, NN6 6DD
 Website: www.scaldwellparishcouncil.org.uk email: scaldwellpc@gmail.com

Since the last newsletter, the Parish Council has met on two occasions, both via 'Zoom'.

Eugene O'Leary stepped down from his role as Chairman and ceased to be a Councillor at the end of 2020. Eugene has been Chairman of the Parish Council since May 2014 and the village owes him a great debt for his service and commitment during this period. The Parish Council would like to extend their thanks to Eugene for all of his work and service to the village wish him well in his retirement from office.

Jane Monk was co-opted as a Councillor and Dudley Cross was elected as Chairman in the first of the two meetings held in January 2021.

Rhian Morgan, an Officer from Daventry District Council briefed the Council on the forthcoming Conservation Area Review. Council was advised of the structure and format of the review which will consider the location of the boundary of the Conservation Area and any potential extension or reduction to this, an appraisal of the area and any threats to the character of the Conservation Area.

The Conservation Area has not been reviewed since 1998 and upon completion, the results of the review will form 'Supplementary Planning Guidance' to be considered in future Planning Applications. The review would normally include a public exhibition and presentation but due to current restrictions, these are likely to be held on-line. Villagers will be provided with the opportunity to raise questions and make representations to inform the review and further details will be provided in due course.

Mark Harrod from Lamport Hall also presented to the Council details of plans for Woodland Creation and Management upon the Lamport Hall Estate. Mark outlined the strategy and philosophy behind the proposals and the impact that these may have upon the village and surrounding areas. The plans will be exhibited on the Parish Council Website for review.

Council discussed and agreed the budget for the forthcoming year, details of which will be available for review in the coming weeks.

Council resolved to convene a steering group and working party to include both Councillors and villagers to consider options regarding speeding and road safety within the village. Details of the initial meeting invitation are elsewhere in the newsletter.

Whilst not strictly a matter for the Parish Council, we have been requested once again to request consideration of neighbours and other residents in relation to bonfires. Villagers are urged to think of the implications of the weather, time of day and the general impact of bonfires upon their neighbours.

Works to the village green, trees and redecoration of the former telephone kiosk have all been approved and instructed by the Council and will commence following an improvement in the weather.

The next scheduled meeting of the Parish Council will take place, via Zoom, on **Wednesday 17th February 2021**. Information on how to access the meeting will be found on the agenda

Traffic Working Party

The Parish Council has become increasingly aware of a number of traffic related issues in the village, the most worrying being speeding and mounting / driving on the footpath (High Street).

It is proposed to set up a small working party of residents and some Councillors to look at possible solutions to these issues.

If you would like to join this group for an initial zoom meeting please send an email to Dara Masterson-Jones at d.mastersonjones@scaldwellpc.org by the 10th February.



NEWSPAPER DELIVERIES TO THE VILLAGE

Did you know that you can get your newspaper delivered to the Bus Shelter here in Scaldwell seven days a week, or just one if you prefer? Papers are there from about 6.30am Monday to Friday and 7.30am on Saturday and Sunday.

Contact Brixworth Stores and they will add you to the list.



Christmas Eve Carol Service



We had a very enjoyable Christmas Carol Service on The Green instead of at our church this year - and thank you for all the feedback. We had around 100 people attend, which was brilliant given all the circumstances. My particular thanks to Nick Masterton-Jones who sorted the technical 'stuff' and Tom Mercer who helped Nick set up on the day. Thanks to Tom, Dara Masterton-Jones, Dave Kier and Christopher Angeloglou for being Scaldwell's first ever COVID marshalls.

However, particular thanks and congratulations to Ava, Erin, Lara Lexi, Ned and Rufus along with Nola and Willa who dazzled the assembled village with beautiful renditions of Away in a Manger and O Little Town of Bethlehem and gave us a perfect start to Christmas. A grateful mention also for Matt Wharton for the bible reading and Nick who led prayers.

Thank you to everyone who helped us beat the previous total for our annual collection which was split between NSPCC - which Pam Long kindly provides details of elsewhere in the newsletter - and Growbaby Northampton, which is a charity that provides practical help and essential items for families in Northamptonshire that are in desperate need.

As Pam mentions, we raised £363.62 for the two charities, so thank you. Tom Joyner

SCALDWELL CHARITY CHRISTMAS CARD

Ms Sue Dodds-Smith
1 The Old Barn
High Street
Scaldwell
Northampton
NN6 9BY

21 December 2020

Dave Moxdodd-Smith

Thank you so much for your kind donation of £440 to Médecins
Sans Frontières (MSF). Your support means we can provide medical
aid where it is needed most.

Thank you to all donors



Lower Ground Floor
Townley Farmhouse
100 Leased Street
LONDON, E6 4A 1AU
United Kingdom
+44 (0)20 7601 6000
uk.hq@msf.org
msf.org.uk

The above is an acknowledgement from Médecins Sans Frontières for the £440 raised from the Christmas Card donations.

It is the first paragraph of the letter which goes on to recount a story of an "Emergency in Maternity". Although it is very interesting unfortunately it is far too long to print in the Newsletter. If anyone would like to see it let me know and I can email a copy to you. Thanks to everyone who participated. Sue Dodds-Smith

Scaldwell Educational Charity. In these difficult times when parents may have additional costs regarding home education please remember the above charity may be able to help not only with this aspect of education but also general educational needs. It is open to all ages. All applications to Paul Carter, The Hollies, High Street.

The Scaldwell Relieve in Need Charity is also available to offer financial help to individual parishioners and **Scaldwell Parish Trust** income is available to fund projects for the benefit of the village. Applications to Sue Dodds-Smith, The Old Barn, High Street or d.dodds@me.com

The Foundation of Thomas Roe provides small cash grants for young people (under 25) who live in the parishes of Brixworth or Scaldwell. Applications to Clerk to the Trustees of the Foundation of Thomas Roe, Horton House, Silver Street, Brixworth, Northamptonshire, NN6 9BY or thomasroefoundation@gmail.com

Christmas Eve Charity Collection - Pam Long and Tom Joyner

Due to the pandemic, I have been unable to make my annual door-to-door- collection on behalf of the NSPCC. However, I am very grateful to the PCC for donating half of the collection which was taken at the Carols on the Green on Christmas Eve. A total of £363.62 was raised, and this will be shared between Growbaby Northampton and the NSPCC.

Many thanks to all those who contributed so generously. These charities depend upon donations such as ours, in order to continue to provide essential services to children, and we are most grateful for your contributions.

If you were unable to attend on Christmas Eve, and would still like to donate, please would you either drop an envelope through Tom Joyner's door – the Old Bakehouse on The Green, or through my door Orchard House, West End. Alternatively, I would be very happy to call and collect a donation from your doorstep if that is more convenient.

Many thanks
Pam Long, NSPCC
Tel 881940

Tom Joyner
Tel 07771831375



Boughton Grotto

"The Boughton and Pitsford estates were purchased by Thomas Wentworth (1672-1739), Earl of Strafford and this land was later inherited by his son William Wentworth, 2nd Earl of Strafford (1722-1791). William Wentworth developed his land around Boughton Hall by improving the park, constructing several gothic follies and other structures

and adding gothic ornamentation to several of the existing buildings.

The grotto was constructed sometime around 1770. The half a hemisphere folly was built from limestone rubble and cut into an earth mound that houses a natural spring. This spring was used to supply water for an artificial lake, which once resided in the estate.

Wentworth died without heir and the estate passed to his sister, Lady Lucy Wentworth (1718-1771), who married Sir George Howard (1718-1796). Their daughter, Anne, married in to the Vyse family and the property and lands remained in the Howard-Vyse family for a number of years.

The house at Boughton was deserted after 1808 and by c.1820, it had almost completely been destroyed. A new house was built on the land to the west of the original site of Boughton Hall in 1844.

Many of the follies were also destroyed including 'The Temple' which is presumed to have been levelled when a World War II internment camp was constructed on the site.

In 1927 the estate was broken up and sold by Sir Richard Granville Hytton Howard-Vyse (1883-1962) Today small reminders of Wentworth's, once grand, estate are scattered throughout the village of Boughton."

Go online for directions to this lovely little grotto. Well worth a visit.

SMILING IS INFECTIOUS

By Spike Milligan

Smiling is infectious

You catch it like the 'flu.

When some-one smiled at me today

I started smiling too.

I passed around the corner

And someone saw my grin

When he smiled I realised

I'd passed it on to him.

I thought about that smile,

Then realised its worth

A single smile, just like mine

Could travel round the earth.

So, if you feel a smile begin

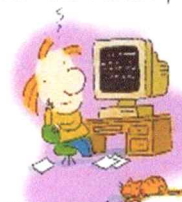
Don't leave it undetected.

Let's start an epidemic quick

And get the world infected

With thanks to Janes Hensman for this contribution.

Ever notice, the older we get,
the more we're like computers?



We start out with lots of
MEMORY and DRIVE
then we become outdated,
and eventually have to get
our parts replaced...:)